

Zen Configurator

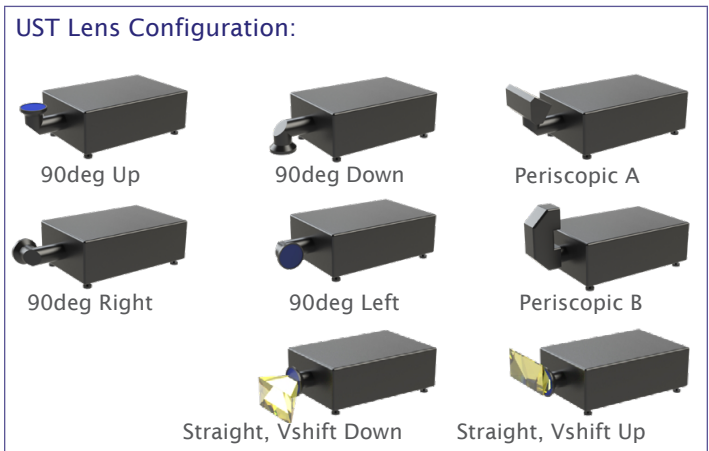
Please complete this form for each Zen model required and email to us at info@tempest.biz

Name *		
Company *		
Email *		
Phone		
Project Name & Location *		
Projector & Lens Make/Model #	Projector: *	Lens: *
Lens Shift (if > 5%)	V %	H %
Zen Model *	57.	Quantity
Destination Country *		
Expected Install Date *		
Enclosure Type *	Landscape	Portrait UST
Projector Slide *		
Supply Voltage *		
Unistrut Kit	Qty	Mounting
Ethernet Comms	Qty	Type
Spare Inlet Filter	Qty	

Zen Touring Options		
Casters Kit	Qty	
Truss Kit	Qty	
Soft Cover	Qty	
Power In Connector		
Signal Connectors:		
Connector Types (up to six Neutrik D-style feedthroughs) Type:	Position: (indicate type)	Text Label (12 characters Max)
A: Ethercon	1	1
B: OpticalCon	2	2
C: HDMI	3	3
D: Displayport	4	4
E: BNC	5	5
F: Blank	6	6
G: Other:		

Projector Power Outlet (all types include IEC 60320 C13 Aux Power):
 Select Type:
 Custom:

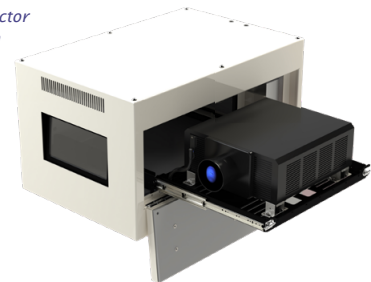
Color, standard	Black	White
Color, custom	Custom, RAL #	
Gloss levels higher than 30% may show up weld marks. Tempest accepts no responsibility in this event.	Gloss Level	%
	Salt Fog Primer: Yes	No



Custom Requests:

Factory Use Only:	SO #:	Date:
Electrical:	IEC	NEMA Wiring p:
Test:	Function	Projector
Hardware Kit:		

* Left projector slide shown here.



User manuals, CAD drawings at www.tempest.biz