

IMPORTANT:

For Remote Fan Assembly information, see drawing # 51.RFA.11

Air Inlet Duct Adapter/Filter

Exhaust Duct Adapter

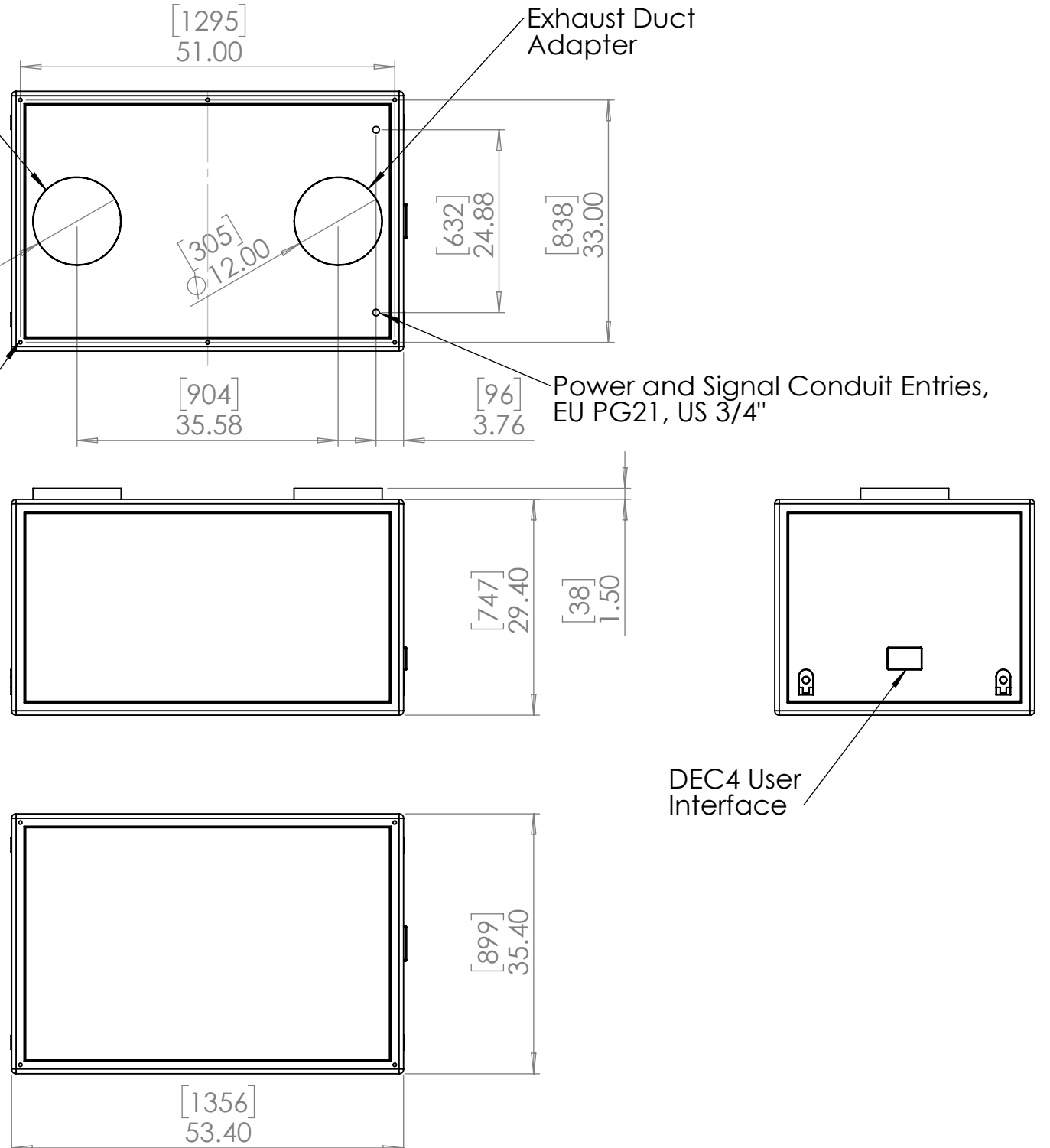
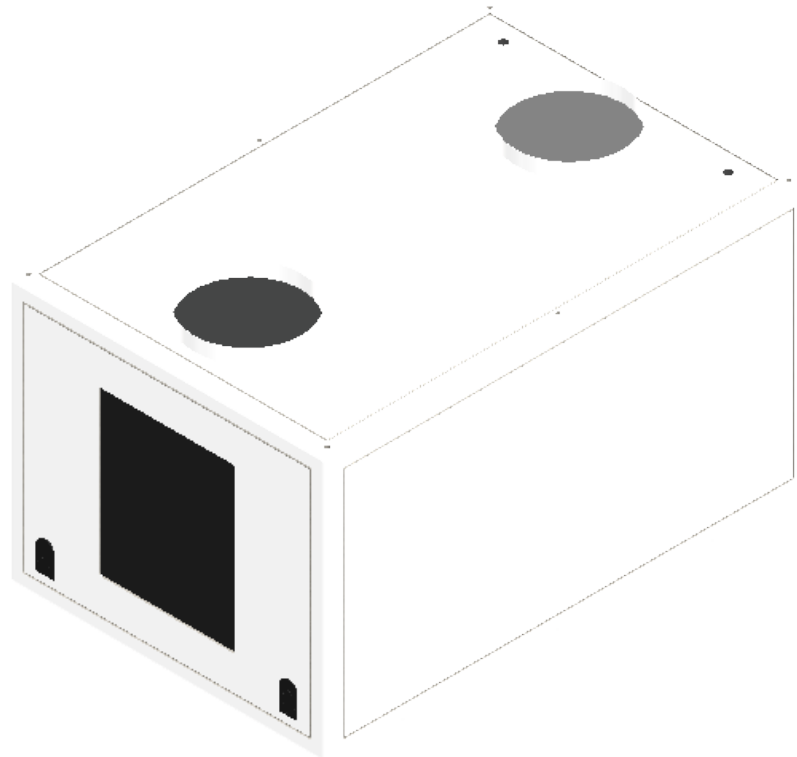
Optical Grade Tempered Port Glass

Rigging Points: 6 x M12-1.75 x 38 threaded holes

Power and Signal Conduit Entries, EU PG21, US 3/4"


Lockable Door Latches front and back

DEC4 User Interface



UNLESS OTHERWISE SPECIFIED:
 DIMENSIONS ARE IN INCHES
 TOLERANCES:
 FRACTIONAL \pm
 ANGULAR: MACH \pm BEND \pm
 TWO PLACE DECIMAL \pm
 THREE PLACE DECIMAL \pm
 INTERPRET GEOMETRIC TOLERANCING PER:
 MATERIAL
 Aluminum & SS
 FINISH
 RAL 9003 White
 DO NOT SCALE DRAWING

| | NAME | DATE |
|-----------|------|------------|
| DRAWN | TB | 12/10/2016 |
| CHECKED | | |
| ENG APPR. | | |
| MFG APPR. | | |
| Q.A. | | |
| COMMENTS: | | |



TEMPEST
lighting inc.

TITLE:
Tacit G4 for Barco HDF

| | | |
|----------|-------------|-----|
| SIZE | DWG. NO. | REV |
| B | 56.350.L.xx | 02 |

SCALE: 1:20 SHEET 1 OF 1