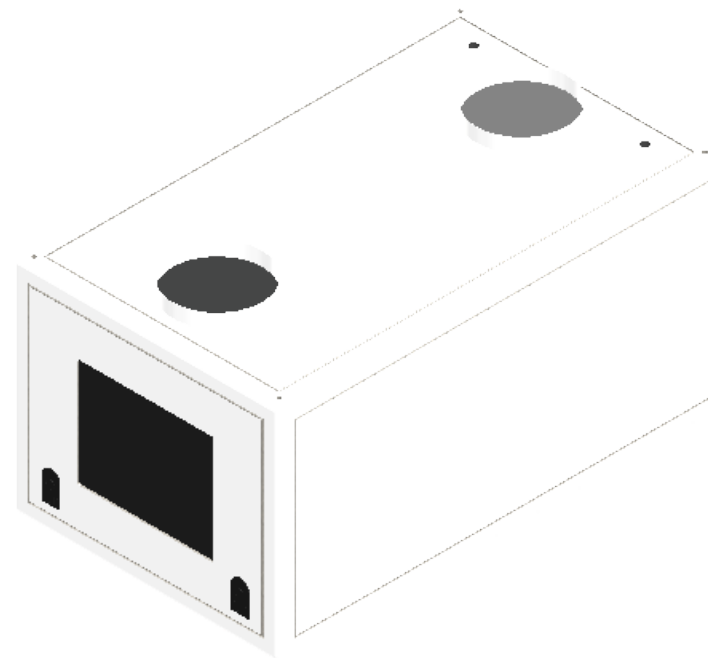


IMPORTANT:

For Remote Fan Assembly information, see drawing # 51.RFA.10



Air Inlet Duct Adapter/Filter

Exhaust Duct Adapter

Rigging Points:
4 x M12-1.75 x 38 threaded holes

Power and Signal Conduit Entries, EU PG21, US 3/4"

Optical Grade Tempered Port Glass

Lockable Door Latches front and back

DEC4 User Interface

[1194]
47.00

[480]
18.88

[686]
27.00

[254]
Ø 10.00

[254]
Ø 10.00

[853]
33.58

[96]
3.76

[620]
24.40

[38]
1.50

[747]
29.40

[1255]
49.40

UNLESS OTHERWISE SPECIFIED:
DIMENSIONS ARE IN INCHES
TOLERANCES:
FRACTIONAL ±
ANGULAR: MACH ± BEND ±
TWO PLACE DECIMAL ±
THREE PLACE DECIMAL ±
INTERPRET GEOMETRIC TOLERANCING PER:

MATERIAL
Aluminum & SS

FINISH
RAL 9003 White

DO NOT SCALE DRAWING

	NAME	DATE
DRAWN	TB	12/10/2016
CHECKED		
ENG APPR.		
MFG APPR.		
Q.A.		
COMMENTS:		



TITLE:
Tacit G4 220 for Barco HDX

SIZE DWG. NO. REV
B 56.220.L.xx 02

SCALE: 1:20

SHEET 1 OF 1