

IMPORTANT:

For Remote Fan Assembly information, see drawing # 51.RFA.10

Air Inlet Duct Adapter/Filter

Exhaust Duct Adapter

[254]
Ø 10.00

[254]
Ø 10.00

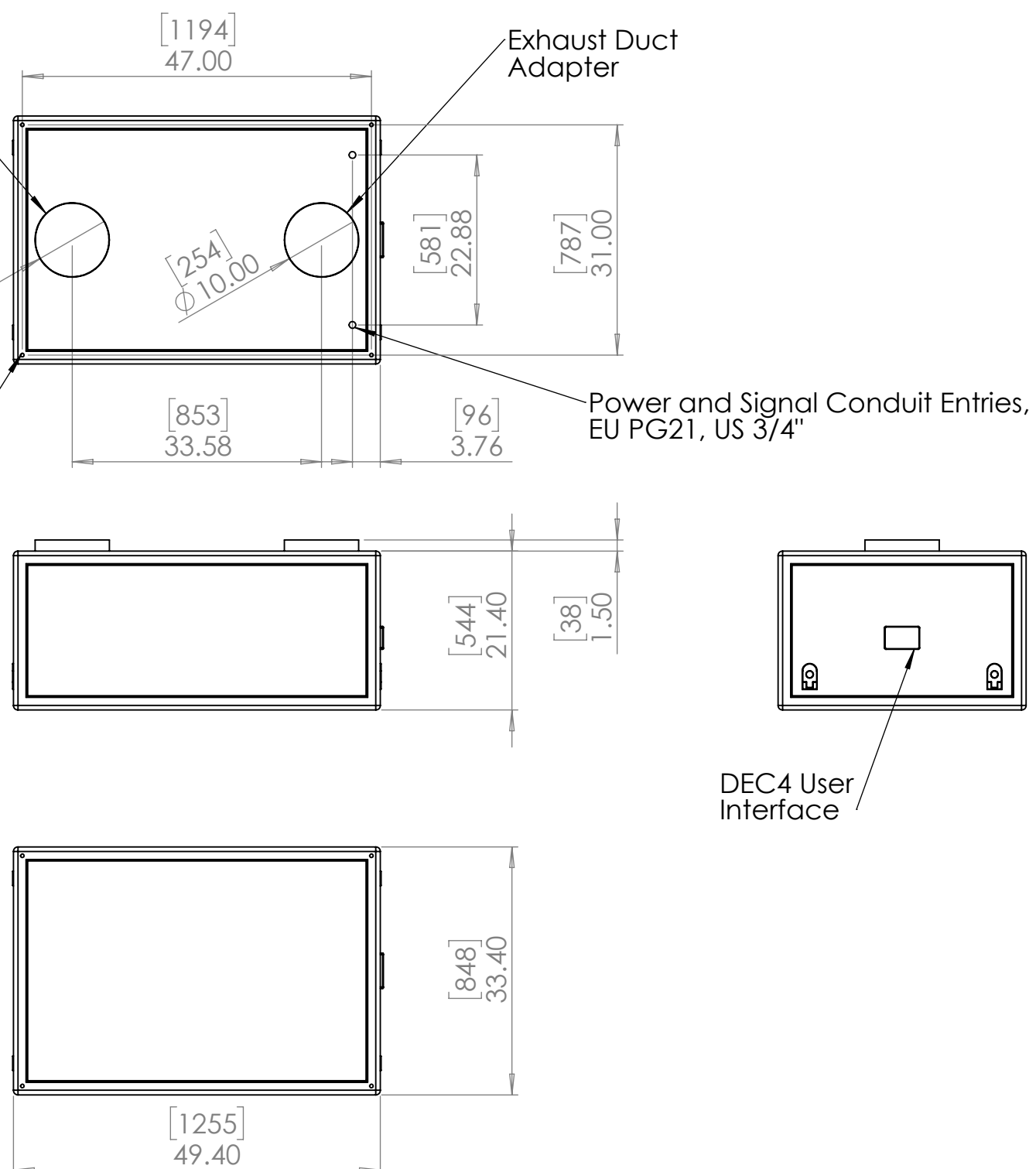
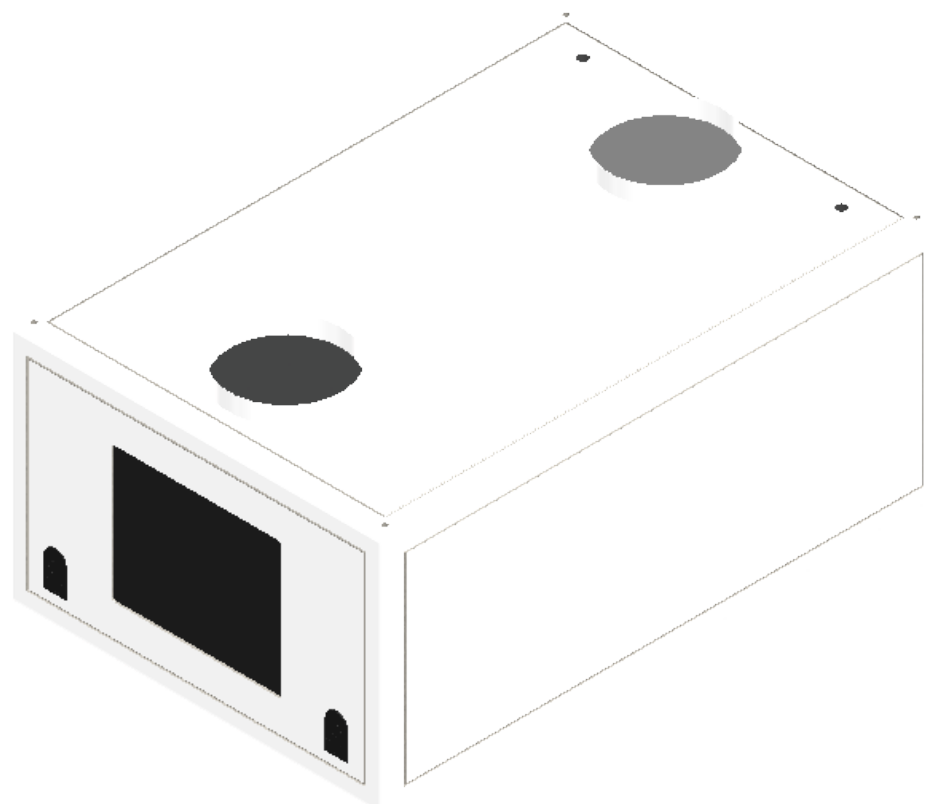
Rigging Points:
4 x M12-1.75 x 38
threaded holes

Power and Signal Conduit Entries,
EU PG21, US 3/4"

Optical Grade Tempered Port Glass


Lockable Door Latches front and back

DEC4 User Interface



UNLESS OTHERWISE SPECIFIED:
DIMENSIONS ARE IN INCHES
TOLERANCES:
FRACTIONAL ±
ANGULAR: MACH ± BEND ±
TWO PLACE DECIMAL ±
THREE PLACE DECIMAL ±
INTERPRET GEOMETRIC TOLERANCING PER:
MATERIAL
Aluminum & SS
FINISH
RAL 9003 White
DO NOT SCALE DRAWING

	NAME	DATE
DRAWN	TB	12/10/2016
CHECKED		
ENG APPR.		
MFG APPR.		
Q.A.		
COMMENTS:		



TEMPEST
lighting inc.

TITLE:
**Tacit G4 200 for
Panasonic PT-DZ21K**

SIZE B	DWG. NO. 56.200.L.xx	REV 02
------------------	--------------------------------	------------------

SCALE: 1:20 SHEET 1 OF 1