



Tempest DEC3.x Firmware Upgrade

User Guide

Revision 0.05

August 2017

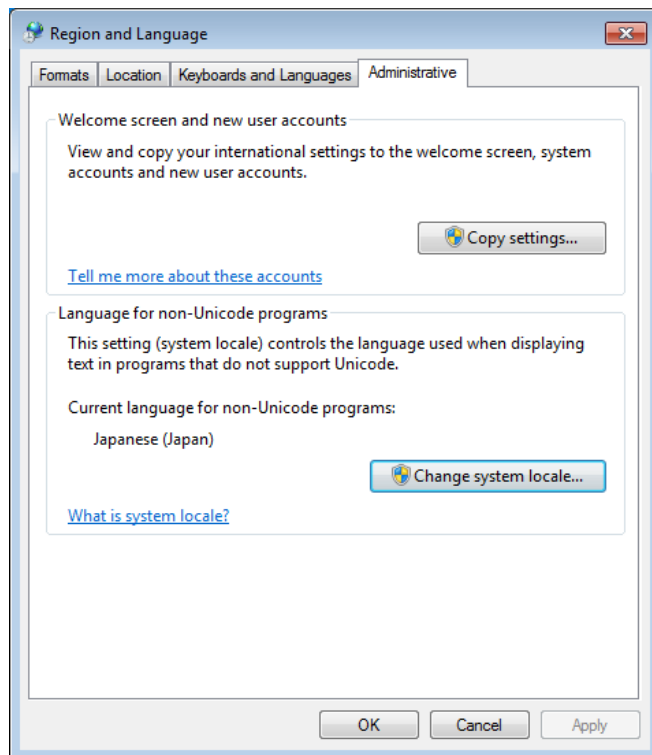
© Tempest Lighting, Inc.



Upgrading Firmware in DEC3.x

PC Configuration

1. Configure the DEC3.x DMX option and set to 'Monitor' mode, using the user interface panel. (See product manual for further instructions on this stage if required)
2. Install JESE GetSet on a Windows PC
3. Ensure PC input locale for non Unicode programs is set to a non Asian language



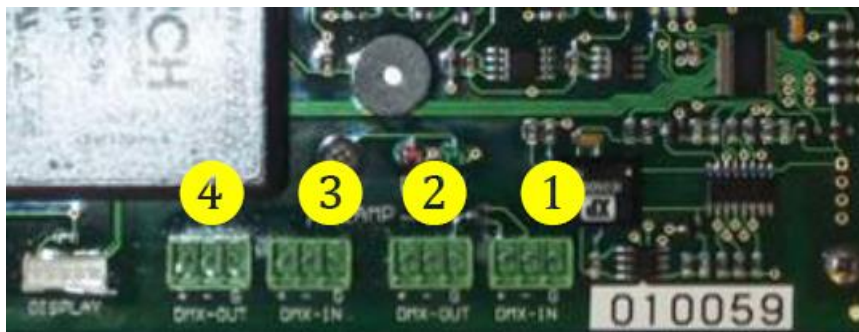
In Windows 7, go to control panel and select Region and Language

Connect to DEC using JESE RDM-TRI Interface

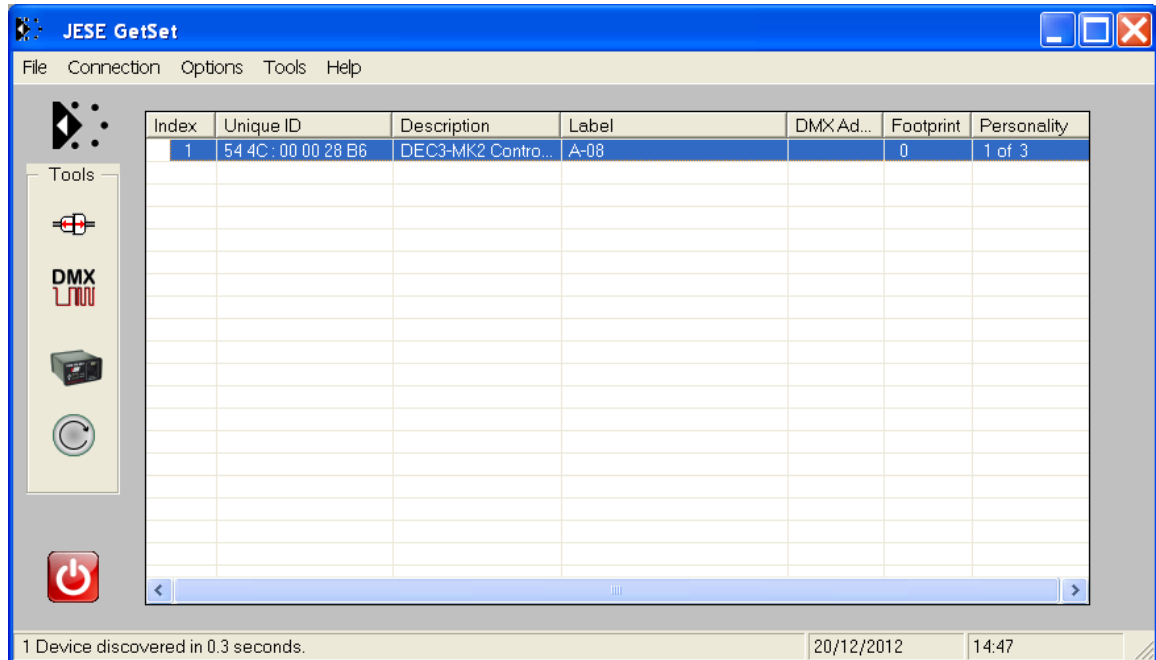


4. Plug your RDM-TRI in to your PC

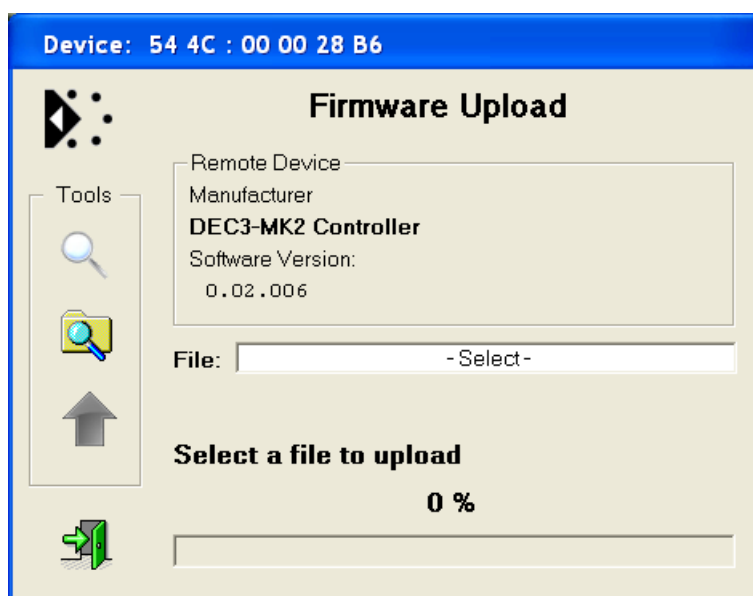
5. Connect the RDM-TRI DMX output to the DMX connection 1 on the DEC3.x



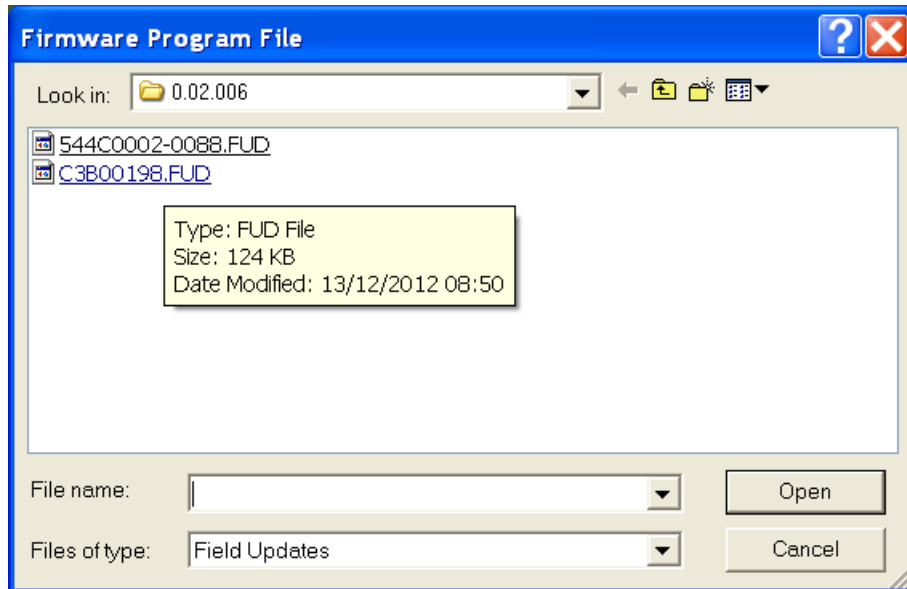
6. Open the GetSet application, connect to the RDM-TRI and discover the DEC3.x



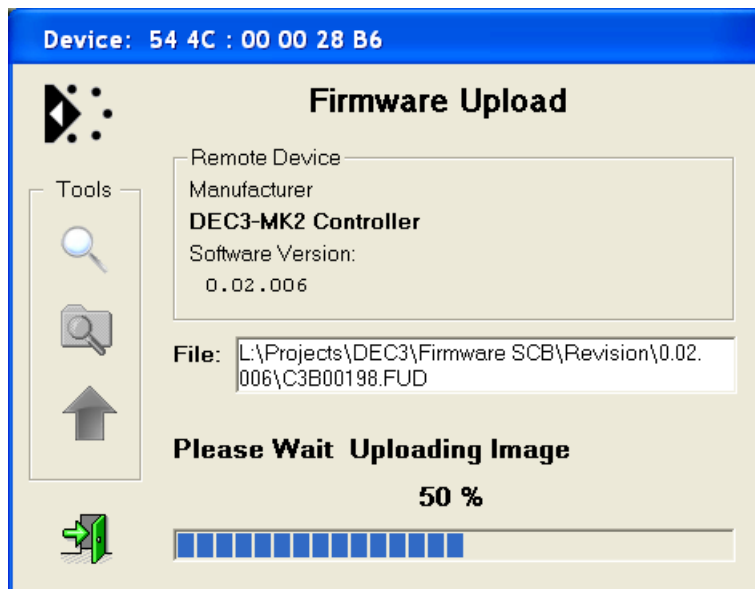
7. Right click on the device to reprogram and select the 'reprogram' option.



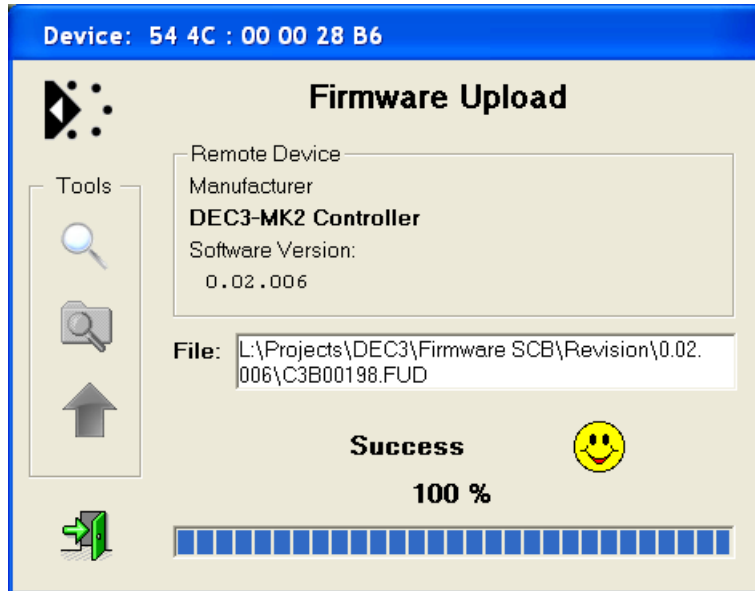
8. Click on the search icon to locate file to upload and select the file to upload.



9. Click on green upload button to start the upload



10. When the upload is complete, the new firmware version number will appear in the information window.



11. Dismiss the upload window and close the application

12. If the DMX or RDM are not being used with the enclosure, return the DEC3.x DMX setting to 'Basic' using the user display

- END -