

JESE RDM-TRI Interface



This RDM interface has been developed by UK-based RDM technology leader JESE as a practical and affordable interface between a Windows PC and a DMX/RDM network.

RDM-TRI works with any compliant RDM device, and has been extensively tested with Tempest Digital Enclosure Control DEC3.2 and up.

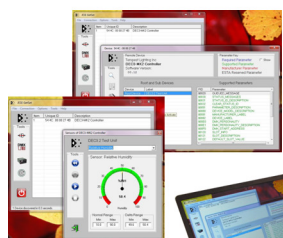
RDM-TRI is the simplest way to monitor your Tempest enclosure installation, or to perform DEC field firmware upgrades.

For Use with:

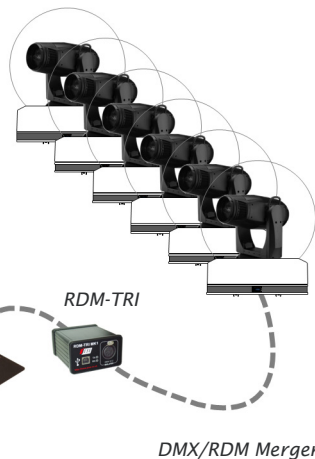
Any Tempest enclosure(s) featuring DEC 3.2 and up.
Any RDM ANSI E1.20 compliant responder.

Part Number	Description
2000.190	JESE RDM-TRI Interface, with USB Cable, GetSet Software and Tempest Graphic User Interface

GetSet includes spreadsheet views and a graphic dashboard plug-in for Tempest controllers DEC3.2 and up.



GetSet software package discovers, configures and monitors all RDM devices on the network. In this example Tempest Tornado enclosures are monitored on the same DMX line as the luminaires inside.



Lighting Controller

DMX512 Transmitter

TRI generates DMX Universe frames asynchronously at rates configurable between 1 to 40 fps. Options are available to update the entire frame at once, a single slot within the frame or to insert a single frame into the transmission sequence.

RDM ANSI E1.20 Receiver

TRI provides synchronous and asynchronous modes for monitoring DMX Frames, giving the application the flexibility to react only when frame data changes.

Controller

Real time RDM protocol handling and checking means that the host application is free to make simple requests and issue instructions to all compliant devices. Onboard discovery routine discovers all compliant devices and compiles a list for the host application to query.

Responder

TRI will respond as a compliant RDM responder when interrogated in a network.

- RDM Protocol Aware
- On Board Discovery
- RDM Idle State Bias
- RDM Error Management
- DMX Input & Output
- 120 Ohm Termination
- DMX Socket 1kV Isolated
- Configurable Parameters
- 1 to 40 Frames/second
- Frame Break Time (BRK)
- Mark After Break (MAB)
- Triple Frame Buffers
- TX & RX Indicators
- Audio Error Indicator
- Two Command Sets
- Robust Firmware Upgrade
- Published Interface Spec

In the interest of continuous product improvement, specifications are subject to change without notice

Tempest Lighting, Inc

13110 Saticoy Street, Unit C, North Hollywood, CA 91605, USA
www.tempest.org info@tempestlighting.com
t: +1 818 787 8984 f: +1 818 982 5510