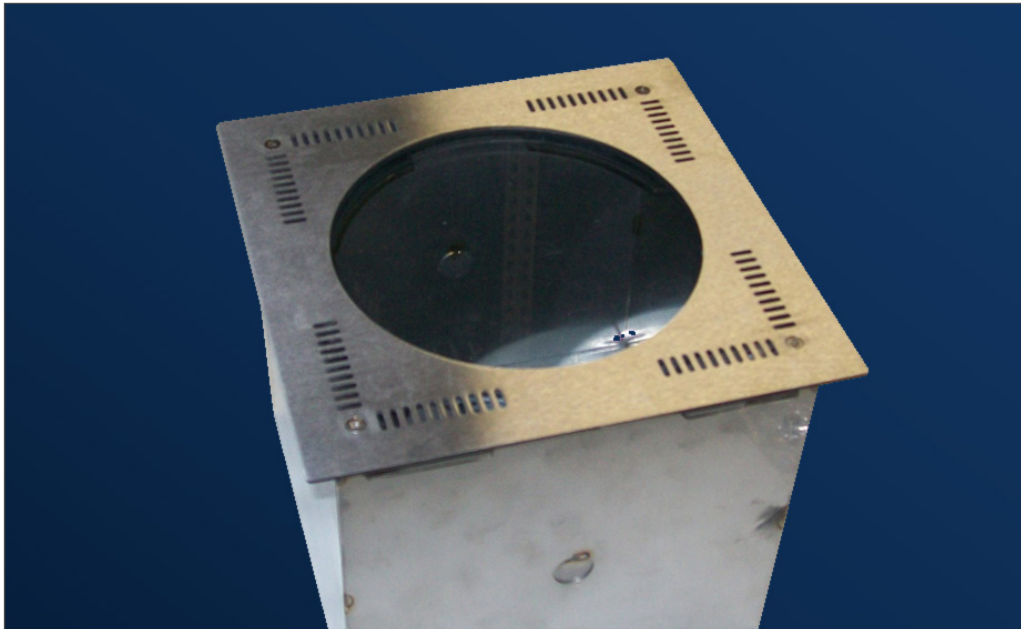


In-Grade LED Fixture Enclosures



Just plant these stainless Steel enclosures in dirt or concrete, and you can light up trees and buildings from below.

Now available for C-Splash, Blast Powercore and the new Burst and Compact Burst Powercore. Very cool.

For Use with:

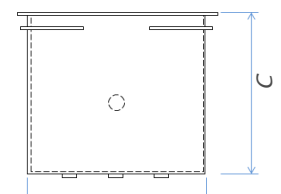
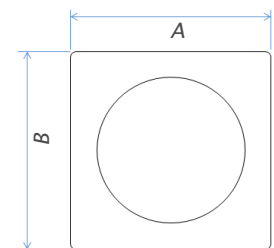
- Philips Color Kinetics C-Splash fixtures
- Philips Color Kinetics Blast Powercore fixtures
- Philips Color Kinetics Compact Burst fixtures
- Philips Color Kinetics Burst fixtures

This enclosure is entirely made from stainless steel, and has a 3/8"(10mm) tempered glass walkover cover.

The flow-through design allows some air circulation to keep the fixture cool, and maintain optimum life.

Outer surfaces are treated with black epoxy powder coat to protect the stainless steel case from chemicals in the concrete. Once installed, the cover may be opened from above with a screwdriver, for easy access to the fixture.

These enclosures MUST be installed on a bed of gravel, and in areas of good drainage, to prevent flooding.



Dimensions (" /mm)

	A	B	C
3500	11/279	11/279	9/229
3520	11/279	16/406	8/203
3530	11/279	11/279	13/330
3560	11/279	11/279	14/356

Part Number	Description	✓
3500.CC	C-Splash In-grade Enclosure	<input type="checkbox"/>
3520.CC	Blast Powercore In-grade Enclosure	<input type="checkbox"/>
3530.CC	Compact Burst In-grade Enclosure	<input type="checkbox"/>
3560.CC	Burst In-grade Enclosure	<input type="checkbox"/>
		<input type="checkbox"/>
		<input type="checkbox"/>

Job Name	
Location	
Architect	
Designer	

In the interest of continuous product improvement, specifications are subject to change without notice

Tempest Lighting, Inc

13110 Saticoy Street, Unit C, North Hollywood, CA 91605, USA
 www.tempest.org info@tempestlighting.com
 t: +1 818 787 8984 f: +1 818 982 5510