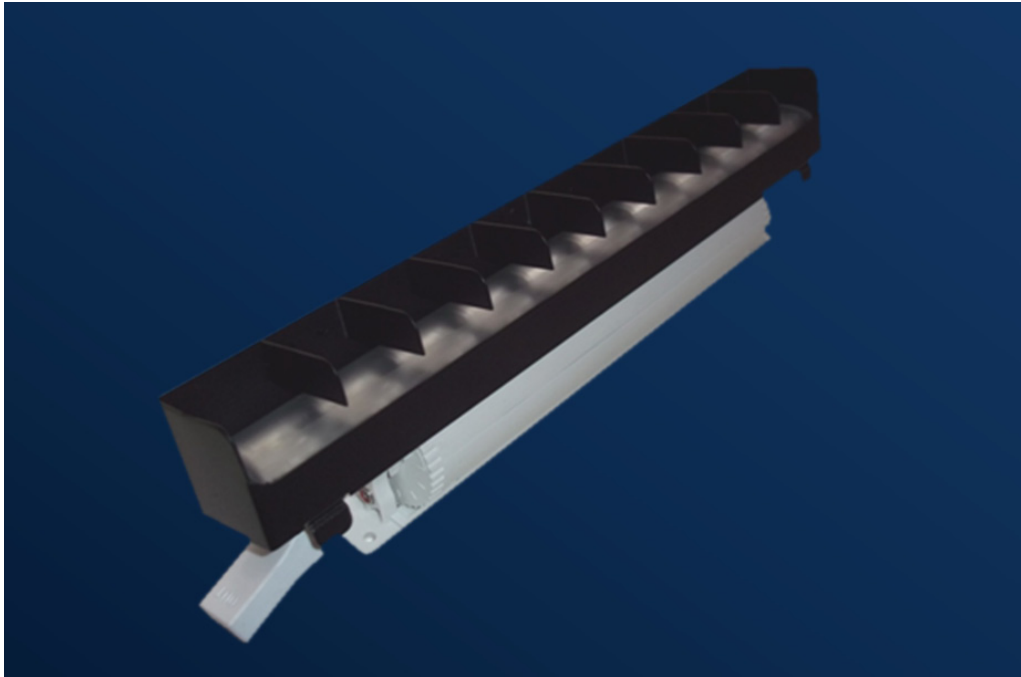


# Fuse/MX Cove Louvers



*Now you can eliminate glare from an exposed cove, without losing light on the ceiling. These handy louvers are available with symmetrical or asymmetric (illustrated) cutoff. Just snap on to any Philips Color Kinetics Fuse or MX cove lighting fixture.*

Part Number	Description	✓
3750.FL6B	Fuse/MX Asymmetric Louver, Black, 6"	
3750.FL12B	Fuse/MX Asymmetric Louver, Black, 12"	
3750.FL48B	Fuse/MX Asymmetric Louver, Black, 48"	
3750.FL6W	Fuse/MX Asymmetric Louver, White, 6"	
3750.FL12W	Fuse/MX Asymmetric Louver, White, 12"	
3750.FL48W	Fuse/MX Asymmetric Louver, White, 48"	
3755.FL6B	Fuse/MX Symmetrical Louver, Black, 6"	
3755.FL12B	Fuse/MX Symmetrical Louver, Black, 12"	
3755.FL48B	Fuse/MX Symmetrical Louver, Black, 48"	
3755.FL6W	Fuse/MX Symmetrical Louver, White, 6"	
3755.FL12W	Fuse/MX Symmetrical Louver, White, 12"	
3755.FL48W	Fuse/MX Symmetrical Louver, White, 48"	

**For Use with:**  
 Philips Color Kinetics Fuse Powercore  
 Philips Color Kinetics MX Powercore

These louvers are fabricated from galvanized steel, and powder-coated to a flat black epoxy finish.

Asymmetric versions have one solid side and one open side, eliminating forward glare, with transverse vanes between each LED optic reducing lateral glare, without diminishing light output or interfering with coverage on the ceiling or wall.

Louvers snap on to the Fuse or MX fixtures in moments, requiring no tools for installation.

Job Name	
Location	
Architect	
Designer	

*In the interest of continuous product improvement, specifications are subject to change without notice*