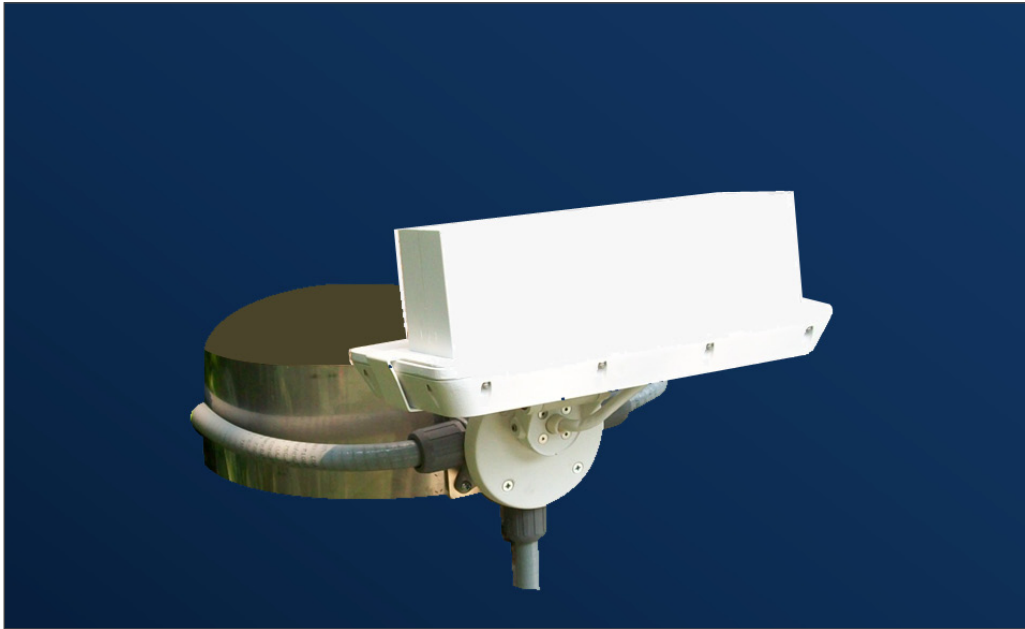


# Blast Tree Huggers



*Yes, we're tree-huggers, and proud of it — these stainless steel belts are a quick and simple way to install up to four Color Kinetics Blast or Burst fixtures on virtually any tree. Belts install in minutes, and can expand as the tree grows.*

**For Use with:**

- Philips Color Kinetics Blast Powercore
- Philips Color Kinetics Burst Powercore
- Philips Color Kinetics Compact Burst Powercore

Tempest Tree belts are made of stainless steel, and incorporate neoprene pads on the inside, to assure excellent grip and no tree damage. Belts simply cinch on to any tree, and may be let out by degrees as immature trees grow.

Each belt comes with one fixture kit – an outdoor aluminum box on a stainless steel plate – ready to support one Blast fixture. Order additional Fixture Kits to mount up to four fixtures per belt.

Wiring is using outdoor-rated flexible conduit (not supplied). Rigid conduit may be used to supply the first fixture.

These Tree Belts are virtually indestructible, and offer a quick and cost-effective alternative to in-grade tree lighting.

Part Number	Description	✓
4745.12	Blast Tree Hugger for trunk diameter 8-18"/20-40cm. Includes one fixture mounting kit	
4745.18	Blast Tree Hugger for trunk diameter 14-24"/35-61cm. Includes one fixture mounting kit	
4745.24	Blast Tree Hugger for trunk diameter 20-30"/50-76cm. Includes one fixture mounting kit	
4745.BX	Fixture Mounting Kit (order one for each fixture in excess of one on each belt)	

Job Name	
Location	
Architect	
Designer	

*In the interest of continuous product improvement, specifications are subject to change without notice*