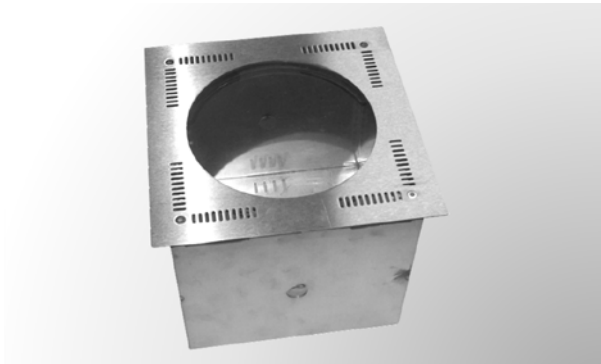


C-Splash In Grade Enclosure Installation



Use these instructions to install a Philips Color Kinetics C-Splash fixture in a Tempest 3500 series in-grade enclosure.

3500.CS C-Splash In-Grade Enclosure (illustrated)
 3500.CC Same, for Concrete Pour

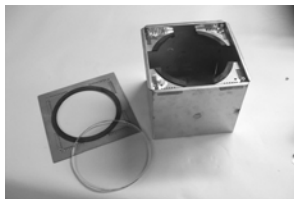
First, Check what you got! You should have the Enclosure, plus:

- 3 x 3/4" 1/4-20 stainless steel Pan head Screws
- 3 x 1/4" stainless steel Flat Washers
- 1 x Tork Screwdriver Bit

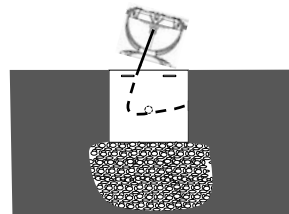
Note: In order to provide adequate ventilation to the fixture and assure normal operating life, these are flow-through enclosures, and must be set in a well-drained location, in at least 8"/20cm of pea gravel.

Enclosure may be walked on, but is not approved for vehicular traffic.

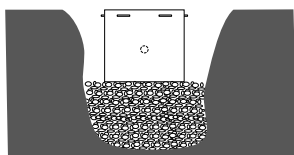
Tempest Lighting Inc. accepts no liability for improper installation or use of this product.



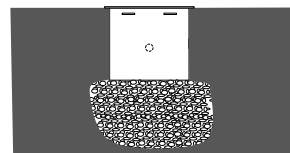
1. Using the special screwdriver bit provided, remove the top cover and tempered safety glass, and set to one side. Punch out the knockout(s) desired for power connection.



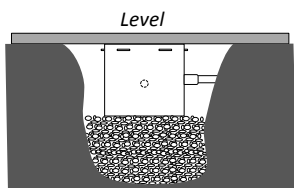
4. When set, pull fixture leader wire through conduit, and fix the C-Splash fixture base to the enclosure base, using the three screws and washers provided.



2. Set the enclosure in a bed of pea gravel at least 8" (20cm) deep, and adjust for height and level to desired surface. NOTE: for concrete pour enclosures, check that the drain holes are not obscured by the protective covering.



5. Adjust fixture angle, and replace glass and top cover, using the 4 security-head screws provided.



3. Install 1/2" conduit to required knockout(s) and backfill dirt or pour concrete. Take care that the top edge of the enclosure is flush to the ground/concrete surface.